

# **Severe Weather Annex**



**August 2023**

## Section 1 – Purpose and Scope

### 1.1 Purpose

This annex establishes the policies and procedures under which the college will operate in the event of a severe weather incident by addressing the planning and operational actions for four of the five phases of emergency management: Mitigation, Preparedness, Response, and Recovery. Prevention will not be covered because severe weather hazards are acts of nature and cannot be prevented. However, they can be planned for.

### 1.2 Scope

This annex is meant to address college planning for a severe weather incident and applies to the Angelina College Lufkin Campus.

## Section 2 – General Information

### 2.1 Hazard Overview

Severe weather can happen anytime and anywhere. Severe weather can include thunderstorms, tornadoes, large hail, flooding, flash flooding, and winter storms associated with freezing rain, sleet, snow, and strong winds. The Angelina College Hazard Analysis will inform which weather events will be addressed in appendices to this annex.

### 2.2 College-Specific Hazard Risk

Angelina College identifies the following severe weather incidents as high or moderate priority. Where noted, these hazards are addressed in an appendix to this annex.

#### Hurricane

A hurricane is a tropical cyclone that has maximum sustained surface winds of 74 mph or greater (64 knots or greater).

#### Thunderstorm

A thunderstorm is a rain shower accompanied by thunder. Because thunder comes from lightning, all thunderstorms have lightning.

#### Tornado

A tornado is a narrow, violently rotating column of air that extends from a thunderstorm to the ground.

### 2.3 Hazard Preparedness and Warning

Angelina College acknowledges that weather-related incidents occur in our region. They are acts of nature and cannot be prevented. However, they can be planned for.

### 2.4 Access and Functional Needs

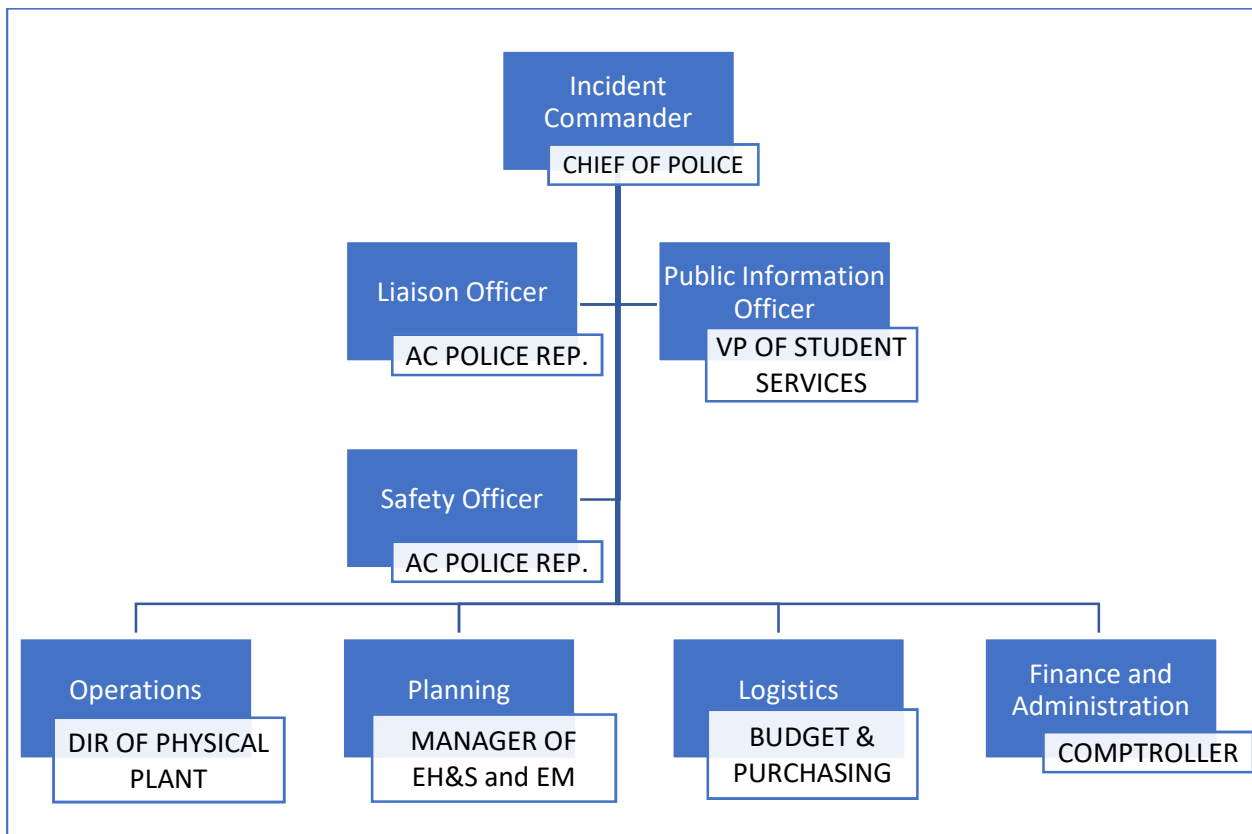
In compliance with [TEC 37.108](#), Angelina College utilizes the following measures to ensure the safety and security of those with access and functional needs during a severe weather incident:

- Disability Services provides accommodations for individuals with access or functional needs such as hearing or vision impairments.
- During an active threat incident, the class instructor is assigned to assist any student with access and functional needs by directing them to the best available shelter area.

## Section 3 – Annex-Specific Incident Command System (ICS)

### 3.1 Annex-Specific ICS Organizational Chart

Angelina College will designate an Incident Commander for a severe weather incident. The Incident Commander will have the ability to expand or contract the ICS structure as necessary during the incident.



Section 4 – Actions and Responsibilities

**College Actions and Responsibilities Table**

<b>Mitigation Phase</b>	
<b>Reduce the impact of a severe weather incident.</b>	
<b>College Action</b>	<b>Responsible Role</b>
Safe room or areas are identified and labeled for severe weather-related hazards.	Manager of EH&S and Emergency Management
All drainage area inlets, subsurface storm sewer pipes, drainage ways and creeks are clear of debris.	Grounds Coordinator
Rapid Response Plans are being developed to shutter utilities for emergency incidents.	Maintenance Coordinator
All campus facilities are inspected for deficiencies on a biannual rotation	Maintenance & Grounds Coordinator
Files and records are backed up from the college mainframe that is powered by a back-up generator.	Sr. Director of IT
Any perishable food items will be disposed of by the Food Services Contractor.	Great Western Dining

<b>Preparedness Phase</b>	
<b>Regularly review college readiness for a severe weather incident.</b>	
<b>College Action</b>	<b>Responsible Role</b>
AC campus has access to the City of Lufkin Emergency Broadcast System and the National Weather Service Alert System	Manager of EH&S and Emergency Management
AC Emergency Management Rep's. attend the Angelina County LEPC meetings	AC Chief of Police & Manager of EH&S and Emergency Management
City of Lufkin Police & Fire Departments are aware that that AC follows SRP as their emergency response to any critical incident.	Angelina College Chief of Police
AC is developing Standard Reunification Method (SRM) Plans for a Campus Evacuation	Manager of EH&S and Emergency Management
AC volunteers provide for all SRM roles which includes ushering students to the SRM Assembly Area.	Manager of EH&S and Emergency Management
All SRM plans are be shared with the local ISD's that bus students to the AC Campus	Manager of EH&S and Emergency Management

Angelina College Severe Weather Annex

<b>Response Phase</b>	
<b>College actions during a severe weather incident.</b>	
<b>College Action</b>	<b>Responsible Role</b>
Campus Phone System and Rave Alert is used for Mass Notification of students, faculty & staff.	Public Information Officer
AC volunteers provide for all SRM roles which includes student direction, accountability and reunification to their proper destination.	Manager of EH&S and Emergency Management
AC will coordinate public information activities with the City of Lufkin through a Joint Information Center.	Public Information Officer
The AC Chief of Police will act as the Incident Commander and will be responsible for Logistics until he assigns a Logistics Section Chief	Angelina College Chief of Police

<b>Recovery Phase</b>	
<b>Return to normal college operations following a severe weather incident.</b>	
<b>College Action</b>	<b>Responsible Role</b>
AC has the college comptroller assigned to oversee all documented expenses required to address damage caused by severe weather.	VP of Business Services
Due to the CoVID pandemic, the college is well prepared to go to online learning.	Executive Director of Academic Affairs
AC has resources required to repair facility damage caused by severe weather.	Sr. Director of Physical Plant Services
AC has an agreement with Burke Center for incident psychological support services.	Executive Director of Student Affairs
AC will contact Angelina County Emergency Management Coordinator if a Search & Rescue Team is required,	Angelina College Chief of Police
AC will conduct an After-Action Review that address what needed improvement from a Emergency Management standpoint.	Manager of EH&S and Emergency Management

## Section 5 – Resources

### 5.1 Acronyms

ICS – Incident Command System

### 5.2 Definitions

**Incident Command System:** The standardized approach globally used during an incident to provide a coordinated, efficient, and effective response among multiple individuals and agencies.